

1 ONE - LINE DIAGRAM
E0.1 N.T.S.

A. APPROVED GENSET MANUFACTURERS:
 1. CATERPILLAR WWW.CAT.COM , CUMMINS POWER GENERATION WWW.CUMMINSPOWERGENERATION.COM <HTTP://WWW.CUMMINSPOWERGENERATION.COM>
 DETROIT DIESEL/MTU WWW.DETROITDIESEL.COM <HTTP://WWW.DETROITDIESEL.COM> BY DDC/MTU POWER GENERATION UNIT OF DAIMLERCHRYSLER, GENERAC
 WWW.GENERAC.COM <HTTP://WWW.GENERAC.COM> , FORD, GM, JOHN DEERE, AB VOLVO PENTA, WAIKESHA PEARCE.
 B. APPROVED AUTOMATIC TRANSFER SWITCH MANUFACTURERS:
 ASCO OR APPROVED EQUAL.
 PROVIDE AUXILIARY CONTACTS FROM THE GENSET AND AT'S FOR MONITORING AND ALARMS FOR THE BUILDING CONTROL SYSTEM.

GENERAL NOTES: (all lighting circuits)
 PROVIDE HUBBELL (OR APPROVED EQUAL) CX LIGHTING CONTROL RELAY PANELS FOR PROGRAMMED CONTROL OF ALL LIGHTING CIRCUITS.
 PROVIDE AUXILIARY AFTER HOURS ON/OFF OVERRIDE CONTROLS FOR OWNER USE. COORDINATE LOCATION OF OVERRIDE SWITCHES WITH OWNER.

LIGHTING FIXTURE SCHEDULE

LOAD	MANUFACTURER / MODEL	MOUNTING	LAMPS TYPE	VOLTS	WATTS	REMARKS
A	PHILIPS DAYBRITE 2FGG43L-840-4-D-UNV-DIM	RECESS	L.E.D.	277	37	2X4 INDIRECT / DIRECT
AE	PHILIPS DAYBRITE 2FGG43L-840-4-D-UNV-DIM-EM	RECESS	L.E.D.	277	37	SAME AS TYPE "A" EXCEPT WITH 90 MINUTE BATTERY BACKUP
B	PHILIPS DAYBRITE 2FGG30L840-2-D-UNV-DIM	RECESS	L.E.D.	277	27	2X2 INDIRECT / DIRECT
BE	PHILIPS DAYBRITE 2FGG30L840-2-D-UNV-DIM-EM	RECESS	L.E.D.	277	27	SAME AS TYPE "B" EXCEPT WITH 90 MINUTE BATTERY BACKUP
C	LIGHTOLIER C4RN / C4L10840WZ10U / C4RDCL	RECESS	L.E.D.	277	11	4" DOWNLIGHT
CE	LIGHTOLIER C4RN / C4L10840WZ10U / C4RDCL - EM	RECESS	L.E.D.	277	11	SAME AS TYPE "B" EXCEPT WITH 90 MINUTE BATTERY BACKUP ALSO TO BE USED IN WET LOCATION (EXTERIOR)
D	PHILIPS DAYBRITE FSS440L835-UNV / FSSWG4	SURFACE	L.E.D.	277	31	4' STRIP W/ WIRE GUARD
DE	PHILIPS DAYBRITE FSS440L835-UNV / FSSWG4 - EM	SURFACE	L.E.D.	277	31	SAME AS TYPE "D" EXCEPT WITH 90 MINUTE BATTERY BACKUP
FE	PHILIPS CHLORIDE PLEBZ	SURFACE	L.E.D.	277	8-3W	EXTERIOR EXIT EGRESS WALL PACK LIGHT WITH 90 MINUTE BATTERY BACK UP (VERIFY COLOR WITH ARCHITECT)
G	axis (axislighting.com) B6PRLED-X-750-90-40-FL -X-W-UNV-X-1-DF-X-EF-X	RECESS	L.E.D.	277	7.4 FT.	DECORATIVE ARCHITECTURAL LIGHT (LENGTHS TO BE DETERMINED)
H	EATON / STREETSWORKS WKP6DLEDEDGL	SURFACE	L.E.D.	277	46	EXTERIOR WALL PACK
J	OAKLEY (SPILIGHTING) AIW8332-L14W-X-UNV-3500K-ES1	SURFACE	L.E.D.	277	14	WALL SCONCE (ARCHITECT TO SELECT FINISH AND COLOR)
XE	EMERGLITE LXN SERIES	SURFACE	L.E.D.	277	4	LED EMERGENCY EXIT WITH GREEN LETTERS. SINGLE OR DOUBLE FACE. CONTRACTOR SHALL KNOCK OUT DIRECTIONAL ARROWS AS INDICATED ON DRAWINGS WITH 90 MINUTE BATTERY BACKUP
X1E	LITHONIA OLLWU-P1-40K-MVOLT-WH	SURFACE	L.E.D.	277	14	WALL SCONCE UP/DN EXTERIOR (WET LOCATION)
X2E	LUMINAIRE L.E.D. VPF4-4-40W-4000K-277-CP-GRY-WET-EMB310	WALL	L.E.D.	277	40	4 FOOT VAPOR TIGHT LED WET LOCATION LIGHT WITH 90 MINUTE BATTERY BACKUP
GL-1	GARDCO BRM830-42-CWL-NW-360-UNIV-XXX	BOLLARD MOUNT LIGHT	L.E.D.	120	41	BOLLARD MOUNTED YARD LIGHT
GL-2	WE-EF LIGHTING ETC130-CB LED 611-3014	RECESS INGROUND	L.E.D.	120	21	INGROUND UPLIGHT (FLAG POLES)
PL-1	GARDCO GL18-1-3-310LA-961A-NW-480-XXX	SITE POLE MOUNT	L.E.D.	480	310	POLE MOUNTED LIGHT WITH ONE LIGHT HEAD MOUNTED ON A 30 FOOT "RTSP" LIGHT POLE WITH 30" BASE
PL-1 POLE	KW INDUSTRIES RTSP30-8.1-11-FINISH-DM-BC	PL-1 SITE SURFACE	N/A	N/A	N/A	30' ROUND TAPERED STEEL POLE (ONE HEAD)
PL-2	GARDCO GL18-2-3-310LA-961A-NW-480-XXX	SITE POLE MOUNT	L.E.D.	480	620	POLE MOUNTED LIGHT WITH TWO LIGHT HEADS @ 180 DEGREE ROTATION MOUNTED ON A 30 FOOT "RTSP" LIGHT POLE WITH 30" BASE
PL-2 POLE	KW INDUSTRIES RTSP30-8.1-11-FINISH-DM-BC	PL-1 SITE SURFACE	N/A	N/A	N/A	30' ROUND TAPERED STEEL POLE (2 @ 180)

LIGHTING FIXTURE SCHEDULE NOTES:
 ① REFER TO ARCHITECT FOR EXACT MOUNTING HEIGHTS AND LOCATIONS.
 ② ALL CEILING LIGHTING FIXTURES SHALL BE SUPPORTED BY FIXTURE SUPPORT SYSTEM RODS OR WIRES, INDEPENDENT OF THE CEILING SUSPENSION DEVICES, FOR EACH FIXTURE, AT ALL FOUR CORNERS.

PANEL "H1" SECT. 1 & 2
 SERVICE: 480 / 277 VOLTS 3 Ø 4 W
 MAINS: 400 AMPS 400A MCB
 CABINET: SURFACE MOUNTED

LOAD	LOAD WATTS	WIRE	CKT. BKR.	400 AMP MCB	CKT. BKR.	WIRE	LOAD WATTS	LOAD
① LIGHTS (EXTERIOR)	541	#12	20	1	2	#12	1,382	LIGHTS (INTERIOR)
LIGHTS (INTERIOR)	711	#12	20	3	4	#12	1,275	LIGHTS (INTERIOR)
LIGHTS (INTERIOR)	1,482	#12	20	5	6	#12	887	LIGHTS (INTERIOR)
LIGHTS (INTERIOR)	1,697	#12	20	7	8	#12	1,508	LIGHTS (INTERIOR)
② ⑤ EXIT LG. AND BAT. PACKS	1,500	#12	20	9	10	#12	1,500	EXIT LG. AND BAT. PACKS
① PARKING LOT LIGHTING	4,340	#12	20	11	12	#12	4,100	MM-1 (ROOM 155)
GENSET JACKET HEATER	2,000	#12	20	13	14			SPACE
SPACE				15	16			SPACE
SPACE				17	18			SPACE
SPACE				19	20			SPACE
SPACE				21	22			SPACE
SPACE				23	24			SPACE
SPACE				25	26			SPACE
SPACE				27	28			SPACE
SPACE				29	30			SPACE
AHU-1	44,043	#4	60	31	32	#9	26,592	ACCU-1
ACCU-2	9,972	#12	20	33	34	#12	15,207	AHU-2
AHU-3	22,437	#10	30	35	36	#12	14,127	ACCU-3
ACCU-4	14,127	#12	25	37	38	#10	22,437	AHU-4
AHU-5	35,733	#6	45	39	40	#8	20,775	ACCU-5
ACCU-6	9,972	#12	20	41	42	#10	22,437	AHU-6
AHU-7	22,437	#10	30	43	44	#17	14,127	ACCU-7
ACCU-OA1	39,057	#6	50	45	46	#8	26,592	OAHU-1
EWB-1	24,000	#8	40	47	48	#1	50,855	TRANSFORMER "TL1"
LOAD	232,049			49	50		223,804	LOAD

TOTAL CONNECTED LOAD = 455,853
 17,233 WATTS LIGHTS = 17,233 x 125% = 21,541
 CODE LOAD (125% LTS) = 323,877 WATTS / 831 = 390 AMPS
 14,000 AIC RATING NEMA 1

① PROVIDE WITH PHOTOCELL "ON" AND TIME CLOCK "OFF" CONTROL.
 ② PROVIDE LOCKED "ON" DEVICE FOR BREAKER.
 ③ PROVIDE WITH TIME CLOCK CONTROL.
 ④ EXIT LIGHT AND BATTERY CHARGING FOR EAST HALF BUILDING.
 ⑤ EXIT LIGHT AND BATTERY CHARGING FOR WEST HALF BUILDING.
 ⑥ VERIFY EXACT ELECTRICAL REQUIREMENTS WITH SELECTED EQUIPMENT PROVIDER.

TURNER DURAN ARCHITECTS
 PHONE (281) 487-1040
 TOLL FREE (800) 897-1040
 WWW.TURNERDURAN.COM
 TURNERDURAN ARCHITECTS, L.P.
 200 WESTHEIMER, SUITE 300
 HOUSTON, TX 77056

The TOWER COMPANY
 MEP CONSULTING ENGINEERS
 5444 WESTHEIMER, SUITE 1680
 HOUSTON, TEXAS 77056
 713-626-7600 713-626-7613 fax
 towerco@subell.net
 TEXAS BOARD OF PROFESSIONAL ENGINEERS
 FIRM REGISTRATION NO. F-6008



WALLER COUNTY
PRECINCT 4 ANNEX BUILDING
 HEMPSTEAD, TEXAS

PROJECT NO: WCA 1801
 COPYRIGHT 2019 TURNERDURAN ARCHITECTS, L.P.
 ALL RIGHTS RESERVED.

MARK	DATE	ISSUED FOR:
	05.30.19	PERMIT/BIDS
△	03.17.20	GENSET ADDITION

SHEET TITLE
ELECTRICAL SCHEDULES AND ONE-LINE
 SHEET NO.
E0.1

PANEL "L1" SECT. 1 & 2

SERVICE: 120 / 208 VOLTS 3 ϕ 4 W
 MAINS: 250 AMPS 250A MCB
 CABINET: SURFACE MOUNTED

LOAD	LOAD WATTS	WIRE	CKT. BKR.	250 AMP MCB	CKT. BKR.	WIRE	LOAD WATTS	LOAD
RECEPT. EXTERIOR (4)	720	#12	20	1	2	#12	720	RECEPT. EXTERIOR (4)
RECEPT. EXTERIOR (4)	720	#12	20	3	4	#12	540	RECEPT. EXTERIOR (3)
ROOM 105 FURN. WHIP	720	#12	20	5	6	#12	720	ROOM 104 FURN. WHIP
ROOM 104 FURN. WHIP	720	#12	20	7	8	#12	1,440	RECEPT. (8) RM. 106
RECEPT. (4) RM. 104	720	#12	20	9	10	#12	540	RECEPT. (3) RM. 104
RECEPT. (1) RM. 109 (MIC.)	1,000	#12	20	11	12	#12	1,000	RECEPT. (1) RM. 109 (MIC.)
RECEPT. (1) RM. 109 (COF.)	1,500	#12	20	13	14	#12	500	RECEPT. (1) RM. 109 (REF.)
RECEPT. (1) RM. 109 (ICE)	750	#12	20	15	16	#12	540	RECEPT. (3) RM. 111 (GFI)
RECEPT. (2) RM. 112 (GFI)	360	#12	20	17	18	#12	720	RECEPT. (4) RM. 100
RECEPT. (1) RM. 103 (EDF)	750	#12	20	19	20	#12	1,440	RECEPT. (8) RM. 115
RECEPT. (1) (COPY) RM. 113	1,500	#12	20	21	22	#12	1,260	RECEPT. (7) RM. 103
RECEPT. (7) RM. 160	1,260	#12	20	23	24	#12	540	RECEPT. (3) RM. 157
RECEPT. (3) RM. 157	540	#12	20	25	26	#12	540	RECEPT. (3) RM. 165 (GFI)
ROOM 157 FURN. WHIP	360	#12	20	27	28	#12	720	ROOM 157 FURN. WHIP
ROOM 157 FURN. WHIP	360	#12	20	29	30	#12	1,440	RECEPT. (8) RM. 157
RECEPT. (1) (COPY) RM. 158	1,500	#12	20	31	32	#12	1,440	RECEPT. (8) RM. 159
RECEPT. (8) RM. 148	1,440	#12	20	33	34	#12	540	RECEPT. (3) RM. 149 (GFI)
RECEPT. (8) RM. 121	1,440	#12	20	35	36	#12	540	ROOM 120 FURN. WHIP
ROOM 120 FURN. WHIP	540	#12	20	37	38	#12	540	ROOM 120 FURN. WHIP
RECEPT. (7) RM. 122	1,260	#12	20	39	40	#12	1,080	RECEPT. (6) RM. 120
RECEPT. (1) RM. 124 (REF.)	500	#12	20	41	42	#12	750	RECEPT. (1) RM. 124 (ICE)
RECEPT. (1) RM. 124 (DISH)	750	#12	20	43	44	#12	1,500	RECEPT. (1) RM. 124 (COF.)
RECEPT. (1) RM. 124 (MIC.)	1,000	#12	20	45	46	#12	1,080	RECEPT. (6) RM. 125
RECEPT. (8) RM. 161	1,440	#12	20	47	48	#12	540	RECEPT. (3) RM. 161
RECEPT. (3) RM. 161	540	#12	20	49	50	#12	500	RECEPT. (1) (TELE.) RM. 161
RECEPT. (1) (TELE.) RM. 161	500	#12	20	51	52	#12	500	RECEPT. (1) (TELE.) RM. 161
METAL DETECTORS RM. 160	1,500	#12	20	53	54	#12	500	RECEPT. (1) (TELE.) RM. 162
RECEPT. (8) RM. 163	1,440	#12	20	55	56	#12	1,440	RECEPT. (8) RM. 164
FILE CABINET (ELEC.) RM. 154	1,500	#12	20	57	58	#12	1,500	FILE CABINET (ELEC.) RM. 154
RECEPT. (6) RM. 154	1,080	#12	20	59	60	#12	360	RECEPT. (2) RM. 155 (IT)
RECEPT. (2) RM. 155 (IT)	360	#12	20	61	62	#12	360	RECEPT. (2) RM. 155 (IT)
RECEPT. (1) RM. 156 (MIC.)	1,000	#12	20	63	64	#12	1,500	RECEPT. (1) RM. 156 (COF.)
RECEPT. (1) RM. 156 (DISH)	750	#12	20	65	66	#12	750	RECEPT. (1) RM. 156 (ICE)
RECEPT. (1) RM. 156 (REF.)	500	#12	20	67	68	#12	720	RECEPT. (4) RM. 156
RECEPT. (2) RM. 144 (GFI)	360	#12	20	69	70	#12	540	RECEPT. (3) RM. 143 (GFI)
RECEPT. (4) RM. 131	720	#12	20	71	72	#12	1,260	RECEPT. (7) RM. 138
ROOM 127 FURN. WHIP	900	#12	20	73	74	#12	900	ROOM 127 FURN. WHIP
ROOM 127 FURN. WHIP	900	#12	20	75	76	#12	360	ROOM 136 FURN. WHIP
ROOM 136 FURN. WHIP	720	#12	20	77	78	#12	540	ROOM 136 FURN. WHIP
RECEPT. (7) RM. 132	1,260	#12	20	79	80	#12	1,080	RECEPT. (6) RM. 133
RECEPT. (1) RM. 129 (REF.)	500	#12	20	81	82	#12	750	RECEPT. (1) RM. 129 (ICE)
RECEPT. (1) RM. 129 (DISH)	750	#12	20	83	84	#12	1,500	RECEPT. (1) RM. 129 (COF.)
LOAD	35,780						35,730	LOAD

REFER TO SECTION 3 FOR LOAD INFORMATION
10,000 AIC RATING NEMA 1

PANEL "L1" SECT. 3

SERVICE: 120 / 208 VOLTS 3 ϕ 4 W
 MAINS: 250 AMPS (MLO)
 CABINET: SURFACE MOUNTED

LOAD	LOAD WATTS	WIRE	CKT. BKR.	(MLO)	CKT. BKR.	WIRE	LOAD WATTS	LOAD	
RECEPT. (1) RM. 129 (MIC.)	1,000	#12	20	85	86	#12	180	RECEPT. (1) RM. 162	
RECEPT. (1) RM. 121	180	#12	20	87	88	#12	360	RECEPT. (2) RM. M100	
RECEPT. (2) RM. MEZZ. 130	360	#12	20	89	90	#12	750	RECEPT. (1) RM. 141 WASHER	
RECEPT. (1) RM. 141 DRYER	1500	#12	20	91	92			SPACE	
SPACE				93	94			SPACE	
SPACE				95	96			SPACE	
SPACE				97	98			SPACE	
SPACE				99	100			SPACE	
SPACE				101	102			SPACE	
SPACE				103	104			SPACE	
SPACE				105	106			SPACE	
SPACE				107	108			SPACE	
SPACE				109	110			SPACE	
GENSET BATTERY CHARGER	1,500	#12	20	111	112			SPACE	
SPACE				113	114			SPACE	
SPACE				115	116			SPACE	
FIRE PUMP HEAT & LIGHT	1,500	#12	20	117	118	20	#12	1,200	JOCKEY PUMP
SITE (INGROUND) LTG.	410	#12	20	119	120				
EF-1	400	#12	20	121	122	20	#12	1,500	SITE GATES
HWCP-1	300	#12	20	123	124	20	#12	500	IRRIGATION SYSTEM
FACP	500	#12	20	125	126	20	#12	500	B.A.S.
LOAD SECT. 1 & 2	35,780							35,730	LOAD SECT. 1 & 2
LOAD SECT. 3	6,150							4,990	LOAD SECT. 3
TOTAL LOAD	41,930							40,720	TOTAL LOAD

TOTAL CONNECTED LOAD = 82,650 WATTS
 69,090 WATTS RECEPTACLES: 10,000 + 50% OF 59,090 = 39,545
 CODE LOAD = 53,105 WATTS / 360 = 148 AMPS
 10,000 AIC RATING NEMA 1

- 1 PROVIDE WITH TIME CLOCK CONTROL.
- 2 PROVIDE BREAKER WITH LOCK "ON" DEVICE. COORDINATED EXACT LOCATION WITH ARCHITECT AND OWNER.
- 3 COORDINATE EXACT LOCATION WITH LANDSCAPER.
- 4 COORDINATED EXACT LOCATION WITH MECHANICAL CONTRACTOR.
- 5 PROVIDE WITH PHOTOCELL "ON" AND TIME CLOCK "OFF" CONTROL.
- 6 TELEVISION/MONITOR COORDINATE EXACT MOUNTING HEIGHT WITH ARCHITECT/OWNER.
- 7 METAL DETECTORS COORDINATE EXACT ELECTRICAL REQUIREMENTS WITH EQUIPMENT SUPPLIER.
- 8 ELECTRONIC FILE CABINET SYSTEM VERIFY EXACT MOUNTING HEIGHT AND ELECTRICAL REQUIREMENTS WITH EQUIPMENT SUPPLIER.
- 9 COORDINATE EXACT ELECTRICAL REQUIREMENTS WITH EQUIPMENT SUPPLIER.

PANEL "MDP"

SERVICE: 480 / 277 VOLTS 3 ϕ 4 W
 MAINS: 600 AMPS 600A MCB
 CABINET: SURFACE MOUNTED

LOAD	LOAD WATTS	WIRE	CKT. BKR.	600 AMP MCB	CKT. BKR.	WIRE	LOAD WATTS	LOAD
SEPTIC EQUIPMENT (SP-1)	6,300	#12	20	1	2	4#500 KCMIL, 1#1/0 GND, THWN CU, 4°C.	323,877	PANEL "H1"
DOMESTIC WATER PUMPS (DBP-1)	14,044	#12	20	3	4		6,300	WATER WELL (WP-1)
SPACE				5	6			SPACE
SPACE				7	8			SPACE
SPACE				9	10			SPACE
SPACE				11	12			SPACE
SPACE				13	14			SPACE
SPACE				15	16			SPACE
SPACE				17	18			SPACE
LOAD	20,344						330,177	LOAD

TOTAL CONNECTED LOAD = 350,521
 CODE LOAD (125% LTS) = 350,521 WATTS / 831 = 422 AMPS
 22,000 AIC RATING NEMA 1

TURNER DURAN ARCHITECTS

The TOWER COMPANY
 MEP CONSULTING ENGINEERS
 5444 WESTHEIMER, SUITE 1680
 HOUSTON, TEXAS 77056
 713-626-7600 713-626-7613 fax
 towerco@swbell.net



WALLER COUNTY
 PRECINCT 4 ANNEX BUILDING
 HEMPSTEAD, TEXAS

PROJECT NO: WCA 1801
 COPYRIGHT 2019 TURNER DURAN ARCHITECTS, L.P.
 ALL RIGHTS RESERVED.

MARK	DATE	ISSUED FOR:
	05.30.19	PERMIT/BIDS
△	09.03.19	ASI
△	03.17.20	GENSET ADDITION

SHEET TITLE
**ELECTRICAL
 PANEL
 SCHEDULES**

SHEET NO.
E0.2

TURNER DURAN ARCHITECTS, L.P.
 200 WESTHEIMER, SUITE 300
 HOUSTON, TX 77056
 WWW.TURNERDURAN.COM
 PHONE (281) 497-1040
 TOLL FREE (800) 897-1040
 FAX (281) 497-1040

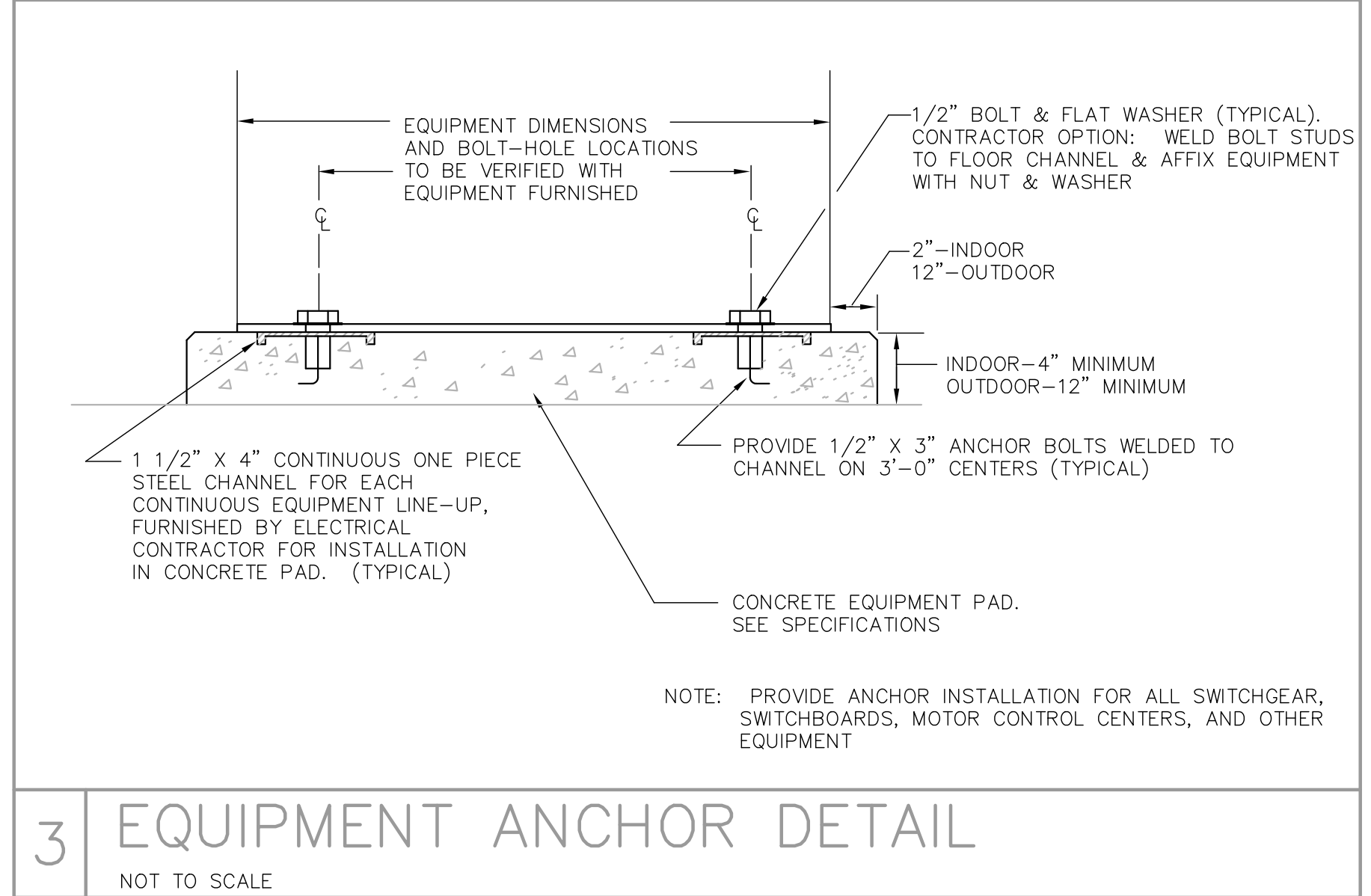
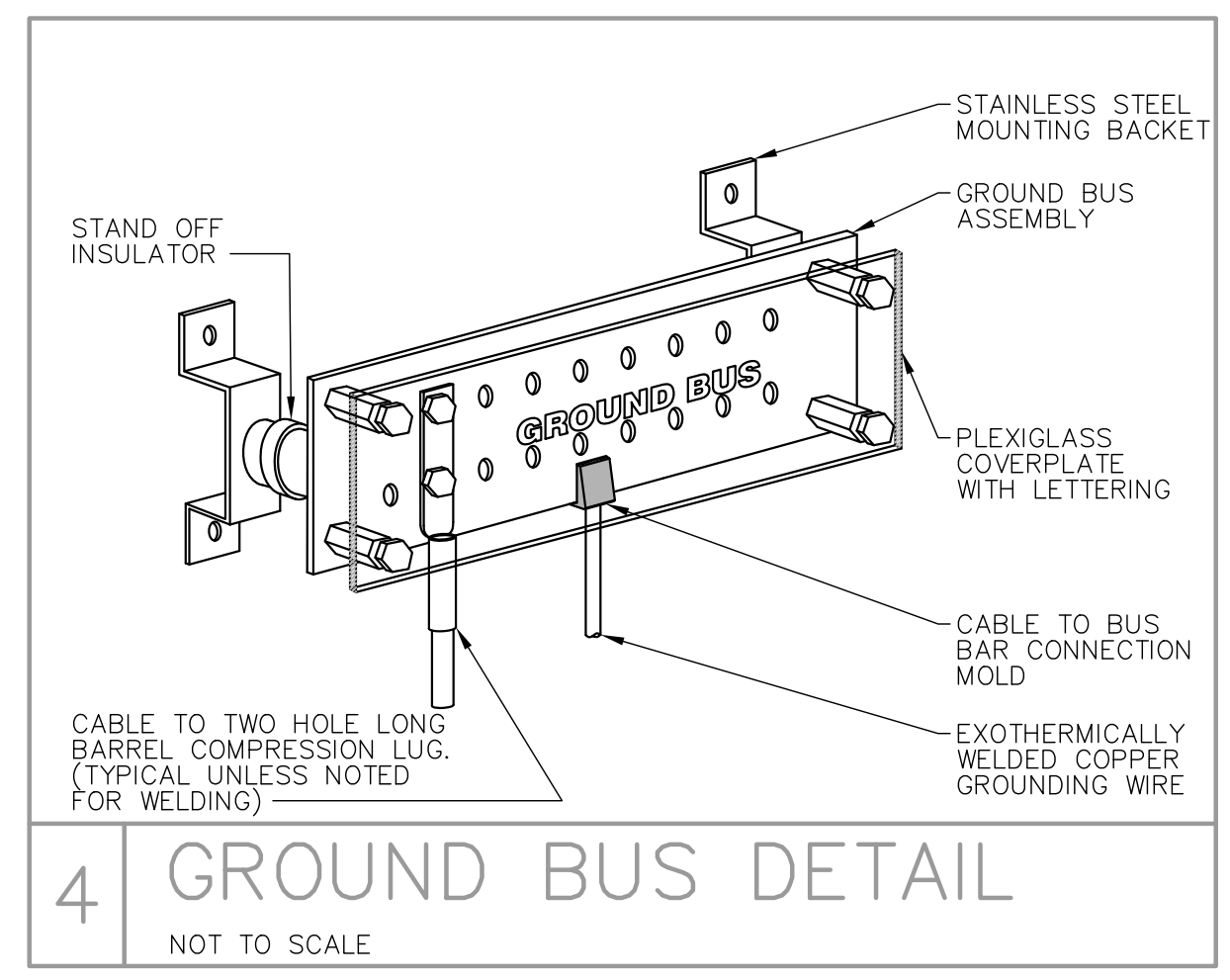
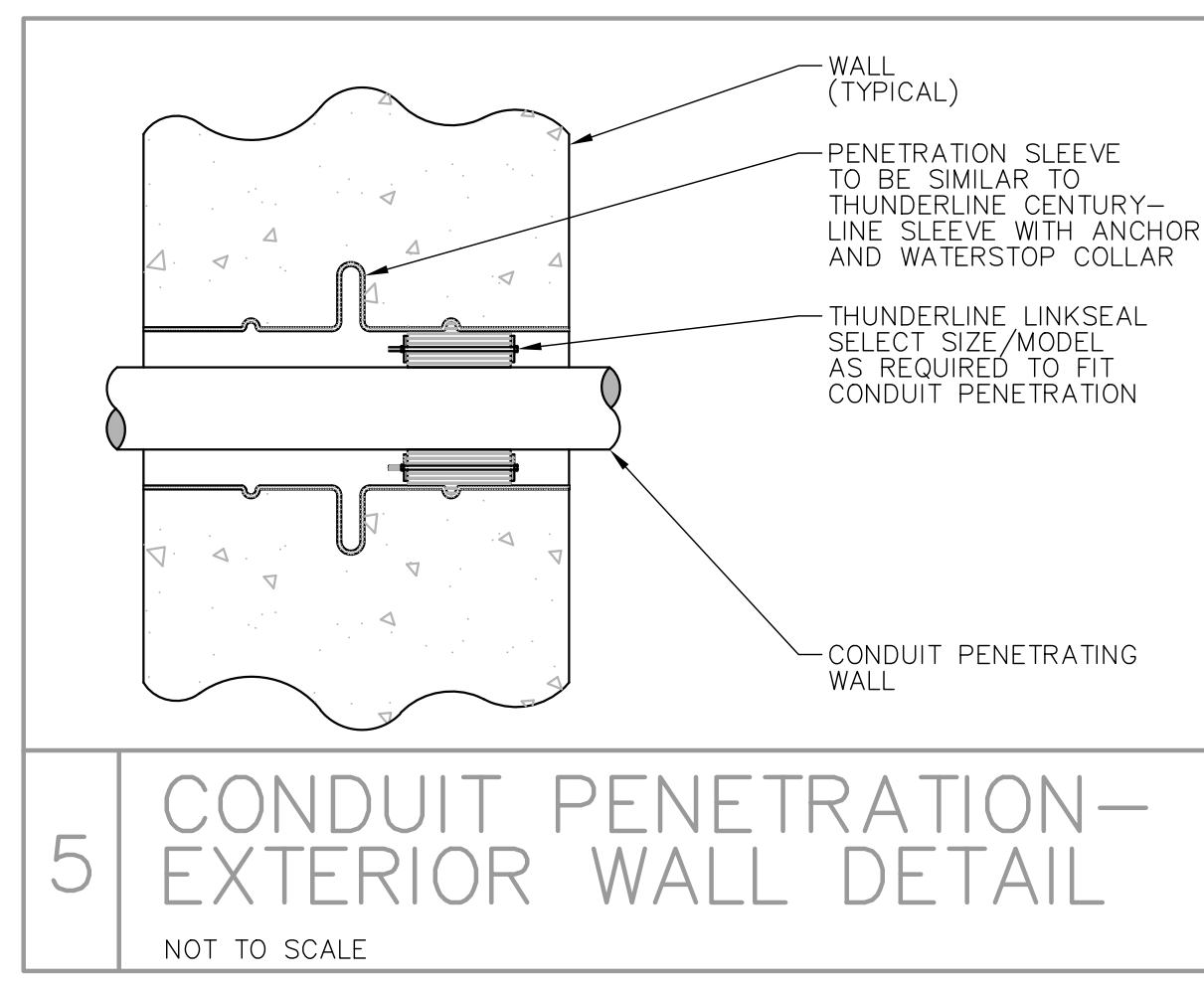
The TOWER COMPANY
 MEP CONSULTING ENGINEERS
 5444 WESTHEIMER, SUITE 1680
 HOUSTON, TEXAS 77056
 713-626-7600 713-626-7613 fax
 towerco@swbell.net
 TEXAS BOARD OF PROFESSIONAL ENGINEERS
 FIRM REGISTRATION NO. F-6008



WALLER COUNTY
PRECINCT 4 ANNEX BUILDING
 HEMPSHIRE, TEXAS

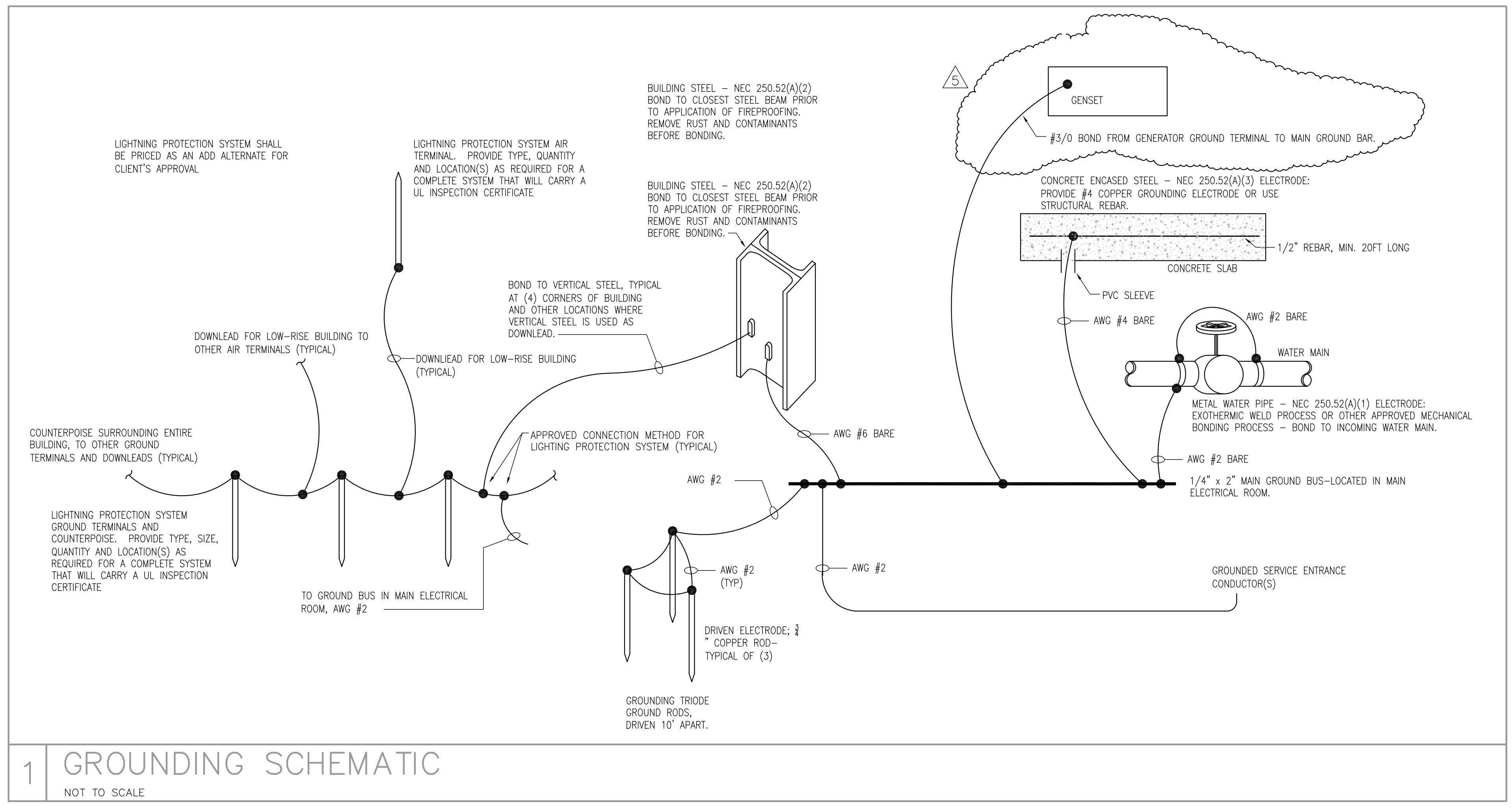
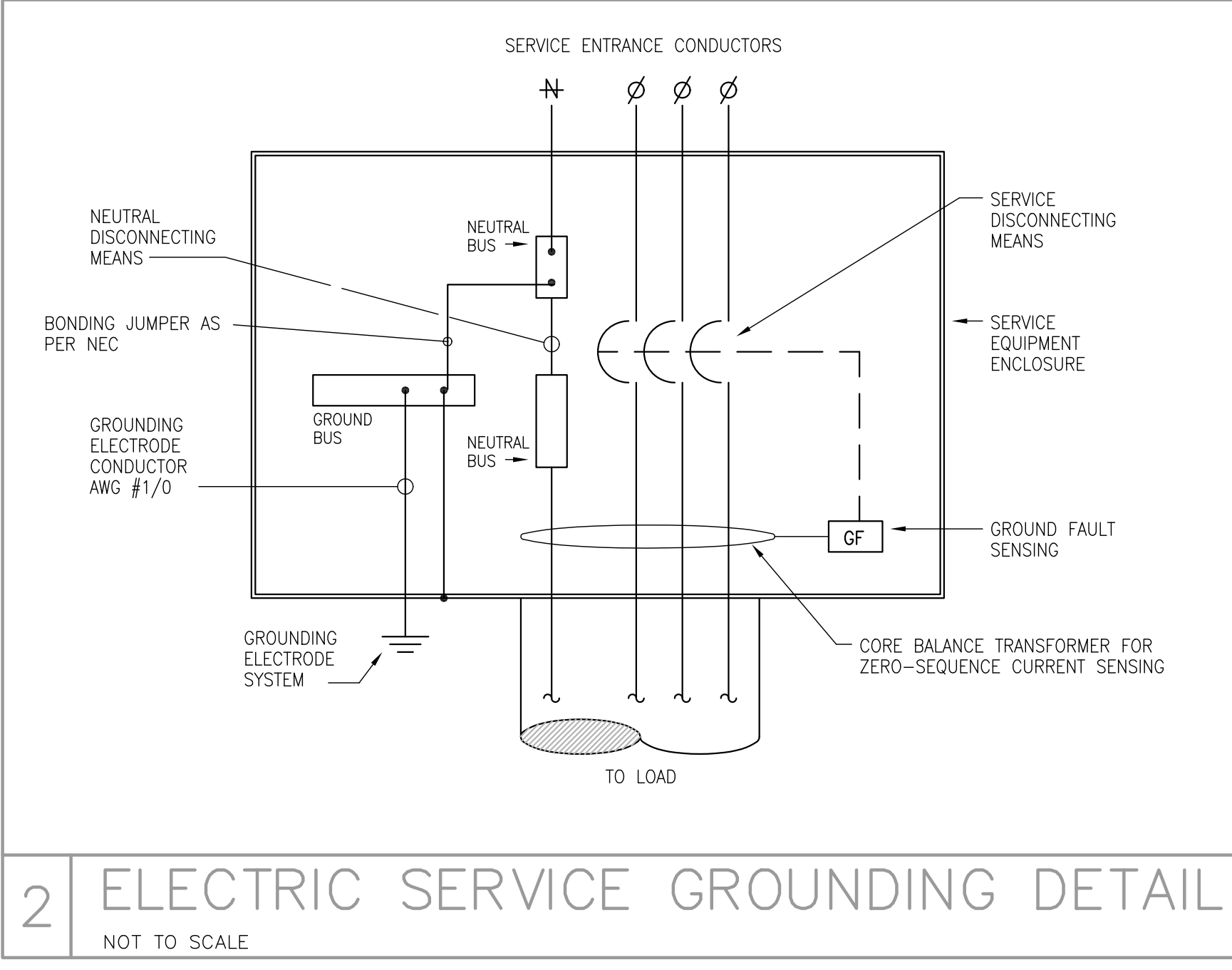
PROJECT NO: WCA 1801		
COPYRIGHT 2019 TURNERDURAN ARCHITECTS, L.P. ALL RIGHTS RESERVED.		
MARK	DATE	ISSUED FOR:
	05.30.19	PERMIT/BIDS
△	03.17.20	GENSET ADDITION

SHEET TITLE
ELECTRICAL DETAILS, NOTES, AND LOAD ANALYSIS
 SHEET NO.
E0.3



- ### GENERAL ELECTRICAL NOTES
- UNLESS SPECIFICALLY INDICATED ON THE DRAWINGS OR OTHERWISE INSTRUCTED BY THE ARCHITECT, ELECTRICAL OUTLETS SHALL HAVE THE FOLLOWING MOUNTING HEIGHTS. DIMENSIONS ARE TO CENTER OF BOX UNLESS OTHERWISE NOTED:

WALL SWITCHES	18" AFF TO BOTTOM OF BOX
WALL CONVENIENCE RECEPTACLES	18" AFF TO BOTTOM OF BOX
WALL TELEPHONE OUTLETS	18" AFF TO BOTTOM OF BOX
WALL OUTLETS FOR WALL MTD. TELEPHONE	
WALL CLOCK OUTLETS	7'-0" AFF (OR ABOVE CHALKBOARDS WHERE REQUIRED)
MANUAL FIRE ALARM PULL STATIONS	
FIRE ALARM SPEAKER/HORN	1'-0" BELOW CEILING, OR IN CEILING, AS REQUIRED
INTERIOR BELLS, BUZZERS, HORNS	1'-0" BELOW CEILING, OR IN CEILING, AS REQUIRED
SPECIAL PURPOSE WALL OUTLETS	18" AFF TO BOTTOM OF BOX (OR HIGHER AS REQUIRED TO SERVE EQUIPMENT)
PUSH BUTTONS	
	* TOP OF BOX SHALL BE 48" AFF MAX. FOR WHEELCHAIR FRONTAL APPROACH AND FOR SIDE APPROACH. VERIFY EXACT HEIGHT WITH ARCHITECT.
 - UNLESS SPECIFICALLY INDICATED ON THE ELECTRICAL DRAWINGS, OUTLETS LOCATED AT COUNTERS AND CABINETS SHALL BE MOUNTED AS SHOWN ON ARCHITECTURAL DETAILS AND ELEVATIONS, OR AS DIRECTED BY ARCHITECT.
 - COORDINATE MOUNTING HEIGHTS AND DETAILS OF ALL OUTLETS (POWER, SIGNAL, ETC.) WITH ARCHITECTURAL CASEWORK DRAWINGS PRIOR TO DIVISION 16 (26) ROUGH-IN. PROVIDE COORDINATION DRAWINGS IN ACCORDANCE WITH DIVISION 16 (26) SPECIFICATIONS WHERE CONFLICTS EXIST. OBTAIN APPROVAL FROM ARCHITECT BEFORE ELECTRICAL ROUGH-IN WHEN CONFLICTS ARISE.
 - REFER TO MECHANICAL DRAWINGS FOR EXACT LOCATION OF ALL HVAC AND PLUMBING EQUIPMENT.
 - CIRCUITING:
 - BRANCH CIRCUITING IS SCHEMATIC IN NATURE AND IS INTENDED TO INDICATE CIRCUIT LOADING AND CONTROL, NOT METHODS OF INSTALLATION. REFER TO SPECIFICATIONS FOR METHODS OF INSTALLATION AND MATERIALS, INCLUDING WHETHER OR NOT BX IS ALLOWED AND WHETHER "THROUGH-FIXTURE" OR "OCTOPUS (EMT WITH FLEXIBLE WHIPS)" TYPE LIGHTING BRANCH CIRCUITING IS REQUIRED.
 - WHERE WIRE SIZE AND CONDUIT SIZE IS NOT INDICATED ON THE DRAWINGS AND/OR PANEL SCHEDULES, REFER TO SPECIFICATIONS FOR MINIMUM SIZE REQUIRED.
 - BRANCH CIRCUITS ON THE DRAWINGS ARE GENERALLY NOT SHOWN GROUPED IN SINGLE RACEWAYS AND SHARING COMMON NEUTRALS. HOWEVER, GROUPING IS ALLOWED UNDER CERTAIN CONDITIONS. REFER TO DIVISION 16 (26) SPECIFICATIONS UNDER SECTION ENTITLED "ELECTRICAL WIRING" FOR REQUIREMENTS.
 - THE DRAWINGS GENERALLY INDICATE QUANTITY OF CONDUCTORS ON BRANCH CIRCUIT HOME RUNS ONLY. ELSEWHERE WITHIN CIRCUITS, PROVIDE QUANTITY OF CONDUCTORS AS NEEDED TO ACCOMPLISH CIRCUITING AND SWITCHING REQUIREMENTS SHOWN.



2 ELECTRIC SERVICE GROUNDING DETAIL
NOT TO SCALE

1 GROUNDING SCHEMATIC
NOT TO SCALE